



INFORMATION WORKSHEET

EQUIPMENT INFORMATION

Item ID: **19-5357**
 Type: **Horiz. Auto Tie**
 Make: **Selco w/inserter**
 Model: **HLO 107A**
 S/N: **03907181**
 Rebuilt: (Y/N)
 As Is Price:
 Rebuilt Price:



DIMENSIONS/OTHER

Overall Height:	87"	Bale Size:	30 1/2" x 36"
Overall Length:	26' 6"	Bale Dogs: (Y/N)	Yes
Overall Width:	75"	Shear Bar: (Y/N)	Yes
Floor to Top of Chute:	73 1/8"	Machine Weight:	
Chute: ID 28x49 3/4	OD32 1/2 x 54 1/2	Feed Opening:	28" x 49 3/4"

MOTOR SPECS

HP:	20	Amps:	49.3-45/22.7	Frame:	256TC
Volts:	208-230-460	RPM:	1755		

HYDRAULICS

Main Cylinder:	8"	Door Cylinder: (Y/N)	No
Rod Size:	4 1/2"	Tension Cylinder: (Y/N)	Yes
Cycle Time:		Tension Rod:	3 1/2"
ReGen:		Oil Heater: (Y/N)	No
		Oil Cooler: (Y/N)	No

ELECTRONICS

PLC: (Y*/N)	Yes	*Specs:	SLC 150 + SLC150 Expansion
Model:	Allen Bradley		

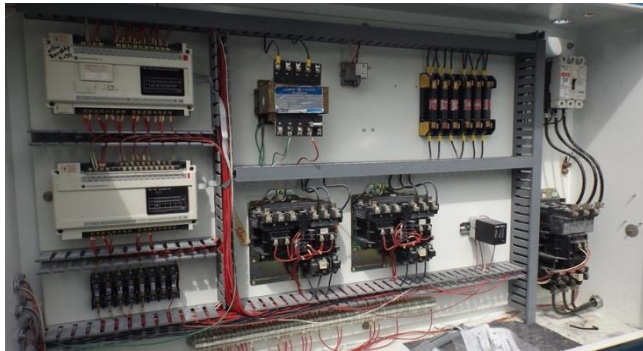
ADDITIONAL FEATURES/NOTES



BALER SERVICE COMPANY

INFORMATION WORKSHEET

PHOTOGRAPHS



SLIDERS RELAY					
SERIES MOTOR					
DATE					
REV.					
VOLTS	230				
AMPS	5.8/2.9				
R.P.M.	1755				
FRAME	56C				
SER. F.	1415	CODE L	DES. B	CLASS F	
NEMA NOM. EFF.	86.5	%	P.F.	75	%
RATING	40C AMB-CONT				
CC	010A	USABLE AT 208V	6.6	A	
BEARINGS	DE 6205	ODE	6203		
ENCL	TEFC	SN	F 1611140773		

www.balerservicekc.com

816.966.8916