



BALER SERVICE COMPANY



EQUIPMENT INFORMATION

Item ID: **21-5377**
 Type: **Auto Tie**
 Make: **Balemaster**
 Model: **4450G-10**
 S/N: **B0122-08-1402514**
 Rebuilt: **No**
 As Is Price:
 Rebuilt Price: **Call for Pricing**



DIMENSIONS/OTHER

Overall Length:	270"	Bale Size: D, H, W	Variable x 36"x 24"
Overall Width:	144"	Bale Dogs:	No
Overall Height:	98"	Shear Bar:	No
Floor to Top of Chute:	88"	Machine Weight:	
Chute: ID	28"x 32"	Feed Opening:	28"x 32"
Insertor L/R:	Right	Open end to Center of Chute:	124"

MOTOR SPECS

HP:	50 HP	Amps:	116/57.8	Frame:	326TC
Volts:	208-230/460	RPM:	1770	Phase:	3

HYDRAULICS

Main Cylinder OD:	8"	Door Cylinder Rod OD:	
Rod Size:	5"	Tension Cylinder OD:	6.5"x 6
Door Cylinder OD:		Tension Rod OD:	2.5"x 6
Cycle Time:		Oil Heater:	
ReGen:		Oil Cooler:	Yes

ELECTRONICS

PLC Make:	Allen-Bradley	Model:	MicroLogix 1200
-----------	----------------------	--------	------------------------

ADDITIONAL FEATURES/NOTES

Year Manufactured:
 Bale Table: **No**

www.balerservicekc.com

816.966.8916

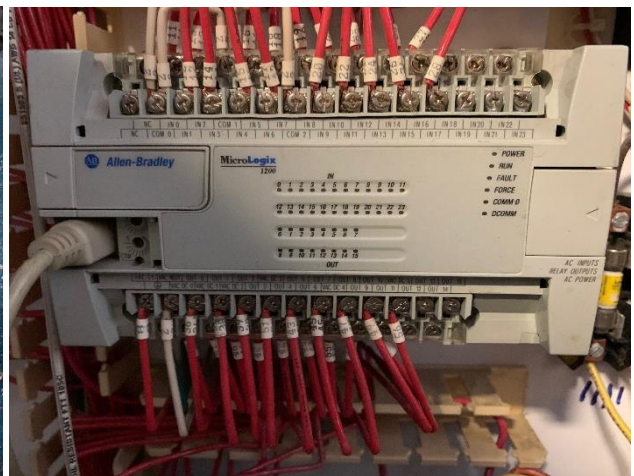


BALER SERVICE COMPANY



PHOTOGRAPHS

Item ID: **21-5377**



www.balerservicekc.com

816.966.8916