



EQUIPMENT INFORMATION

Item ID: **21-5194**
 Type: **Vertical**
 Make: **Load King**
 Model: **6030 WL**
 S/N: **8395**

Rebuilt: **No**
 As Is Price:
 Rebuilt Price: **Call for Pricing**



DIMENSIONS/OTHER

Overall Length:	43"	Bale Size: D, H, W	60"x 30"x 40"
Overall Width:	76"	Feed Opening:	60"x 30"
Overall Height:	132"	Machine Weight:	

MOTOR SPECS

HP:	10 HP	Amps:	28-26/23	Frame:	225TC
Volts:	208-230/460	RPM:	1725		

HYDRAULICS

Main Cylinder: **6.75"**
 Rod Size: **3.5"**
 Cycle Time:
 ReGen:

ELECTRONICS

PLC: **No** Model:
 Make:

ADDITIONAL FEATURES/NOTES

Year Manufactured:

www.balerservicekc.com

816.966.8916

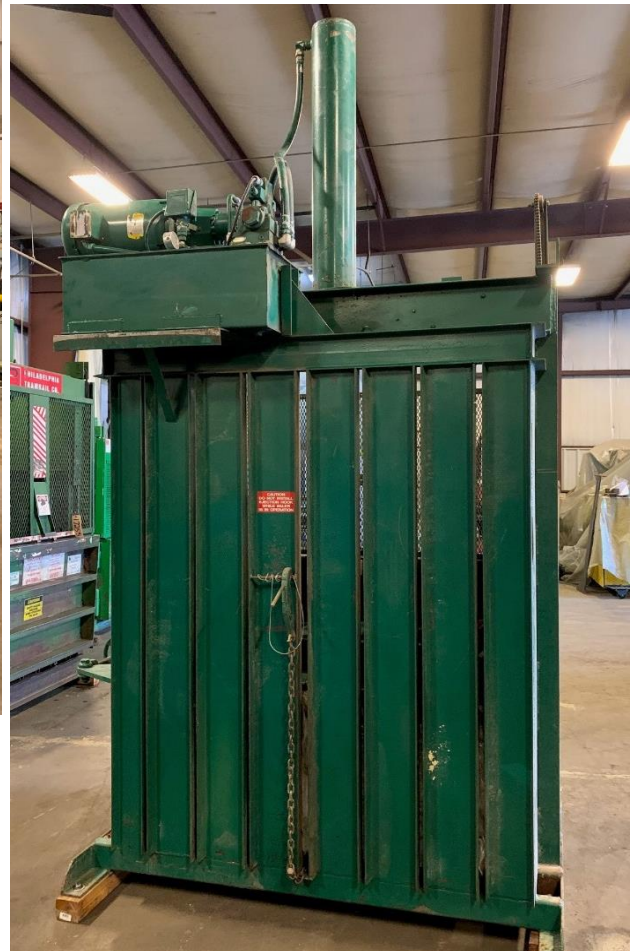


BALER SERVICE COMPANY



PHOTOGRAPHS

Item ID: 21-5194



OPERATING INSTRUCTIONS
LOAD KING VERTICAL BALER

NO. SERIAL NO.

SET "CRUSH/AUTO" SWITCH TO "AUTO" POSITION.
 FILL BALE CHAMBER WITH MATERIAL TO BE BALED.
 PULL DOWN LIFT GATE TO FULLY CLOSED POSITION.
 PRESS "DOWN" BUTTON - MACHINE CYCLES AUTOMATICALLY.
 REPEAT PROCEDURE UNTIL BALE IS COMPLETE. MACHINE WILL
 SHUT OFF AUTOMATICALLY IN DOWN POSITION.
 OPEN MAIN DOOR BY RELEASING DOOR LOCK.
 INSTR. TIES THROUGH SLOTS IN PRESS HEAD AND PRESS FLOOR.
 TIE BALE OFF IN FRONT OF MACHINE.
 HOOP OVER BAR ON REAR OF PRESS HEAD

www.balerservicekc.com

816.966.8916