



BALER SERVICE COMPANY

INFORMATION WORKSHEET

EQUIPMENT INFORMATION

Item ID: **19-5384**
 Type: **Baler**
 Make: **C&M Auto Tie**
 Model: **3430+AT6-6**
 S/N: **5348**
 Rebuilt: (Y/N) **Yes**
 As Is Price:
 Rebuilt Price:



DIMENSIONS/OTHER

Overall Height:	92"	Bale Size:	30 x 39 1/2
Overall Length:	20'	Bale Dogs: (Y/N)	Yes
Overall Width:	61"	Breaker Bar:	Yes
Chute Opening:	34" x 30" I.D.	Insertor	52" x 104" x 29"
Chute Height:	32.5"	Chute flange:	2"

MOTOR SPECS

HP:	30	Amps:	71/35.5
Volts:	460	RPM:	1460

HYDRAULICS

Main Cylinder:	7"	Door Cylinder: (Y/N)	No
Main Bore Size:	5"	Tension Cylinder: (Y/N)	Yes
Cycle Time:	30 seconds	Tension Bore:	3"
ReGen:	Yes	Oil Heater: (Y/N)	No
		Oil Cooler: (Y/N)	No

ELECTRONICS

PLC: (Y*/N)	Yes	*Specs:	110 vac in / 110 vac out
Model:	Allen Bradley 1768-PA3		w/10" touch screen and remote router

ADDITIONAL FEATURES/NOTES

5 wire auto tie unit

www.balerservicekc.com

816.966.8916



BALER SERVICE COMPANY

INFORMATION WORKSHEET

PHOTOGRAPHS



www.balerservicekc.com

816.966.8916

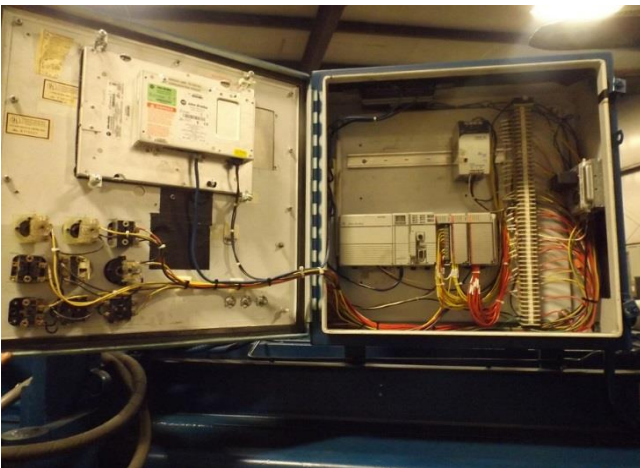
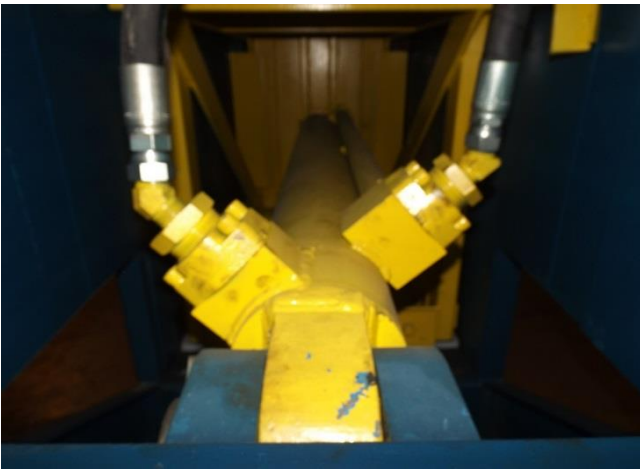
Revised 9/10/2019



BALER SERVICE COMPANY

PHOTOGRAPHS

INFORMATION WORKSHEET



www.balerservicekc.com

816.966.8916

Revised 9/10/2019