



# BALER SERVICE COMPANY

## INFORMATION WORKSHEET

### EQUIPMENT INFORMATION

Item ID: **19-5285**  
 Type: **Baler**  
 Make: **Selco closed door**  
 Model: **HO-50**  
 S/N: **02917415**  
 Rebuilt: (Y/N)  
 As Is Price:  
 Rebuilt Price:



### DIMENSIONS/OTHER

Overall Height:	<b>90"</b>	Bale Size:	<b>72" x 49 1/4" x 36"</b>
Overall Length:	<b>240"</b>	Bale Dogs: (Y/N)	<b>Yes</b>
Overall Width:	<b>83"</b>	Shear Bar: (Y/N)	<b>Yes</b>
Floor to Top of Chute:	<b>77 1/4"</b>	Machine Weight:	
Chute: ID <b>50"x46"</b>	OD <b>54 1/2"x50"</b>	Feed Opening:	

### MOTOR SPECS

HP:	<b>30</b>	Amps:	<b>77.2/38.6</b>	Frame:	<b>286TC</b>
Volts:	<b>230/460</b>	RPM:	<b>1765</b>		

### HYDRAULICS

Main Cylinder:	<b>8"</b>	Door Cylinder: (Y/N)	<b>5" - 2" rod</b>
Rod Size:		Tension Cylinder: (Y/N)	<b>No</b>
Cycle Time:		Tension Rod:	
ReGen:		Oil Heater: (Y/N)	<b>No</b>
		Oil Cooler: (Y/N)	<b>No</b>

### ELECTRONICS

PLC: (Y\*/N) **No** \*Specs:  
 Model:

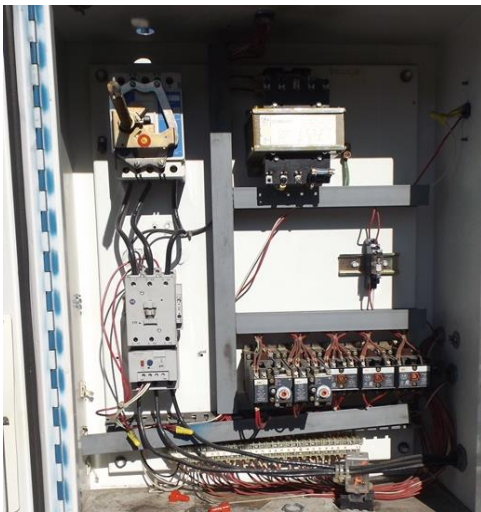
### ADDITIONAL FEATURES/NOTES



**BALER SERVICE COMPANY**

# INFORMATION WORKSHEET

## PHOTOGRAPHS



[www.balerservicekc.com](http://www.balerservicekc.com)

816.966.8916

Revised 7/12/2019



**BALER SERVICE COMPANY**

# INFORMATION WORKSHEET

## PHOTOGRAPHS

