



BALER SERVICE COMPANY

INFORMATION WORKSHEET

EQUIPMENT INFORMATION

Item ID: **19-5212**
 Type: **Baler**
 Make: **IPS**
 Model: **CO-736-20**
 S/N: **3324**
 Rebuilt: (Y/N)
 As Is Price:
 Rebuilt Price:



DIMENSIONS/OTHER

Overall Height:	100"	Bale Size:	29" x 34"
Overall Length:	234"	Bale Dogs: (Y/N)	yes
Overall Width:	56"	Shear Bar: (Y/N)	yes
Floor to Top of Chute:	86"	Machine Weight:	
Chute: ID 50 1/4"x26 3/4" OD 54 1/4" x 31 1/2"		Feed Opening:	26 3/4" x 50"

MOTOR SPECS

HP:	20	Amps:	48/24.1	Frame:	256TC
Volts:	230/460	RPM:	1775		

HYDRAULICS

Main Cylinder:	8"	Door Cylinder: (Y/N)	yes
Rod Size:		Tension Cylinder: (Y/N)	no
Cycle Time:		Tension Rod:	N/A
ReGen:	no	Oil Heater: (Y/N)	yes
		Oil Cooler: (Y/N)	yes

ELECTRONICS

PLC: (Y*/N)	Yes	*Specs:	23 input 15 output
Model:	Allen Bradley		MicroLogic 1200

ADDITIONAL FEATURES/NOTES

Bale Table 26" x 60"

www.balerservicekc.com

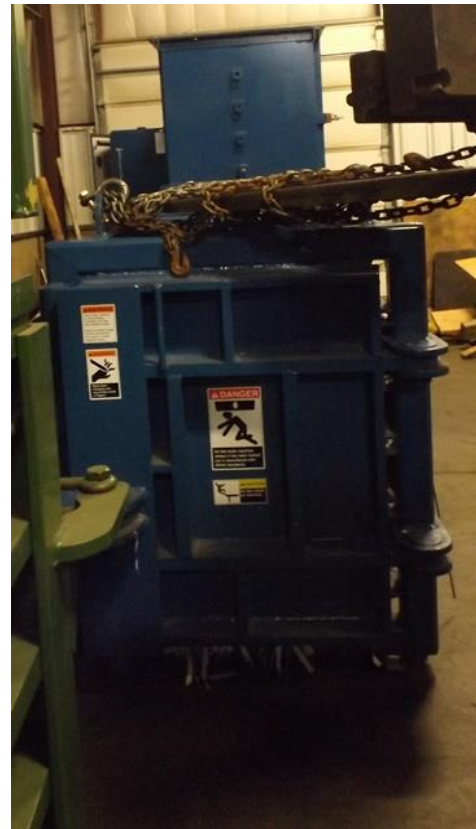
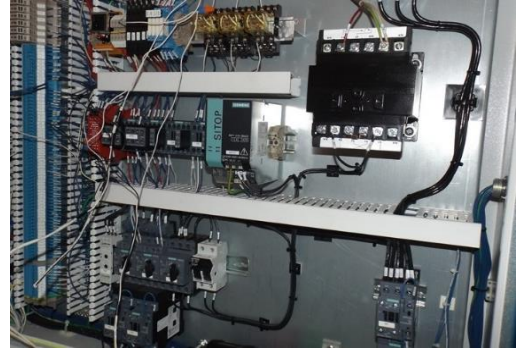
816.966.8916



BALER SERVICE COMPANY

INFORMATION WORKSHEET

PHOTOGRAPHS



www.balerservicekc.com

816.966.8916

Revised 7/1/2019