



BALER SERVICE COMPANY

INFORMATION WORKSHEET

EQUIPMENT INFORMATION

Item ID: **19-5145**
 Type: **Horiz. Baler**
 Make: **Balemaster**
 Model: **4125G-6 JIQUZ6ZY**
 S/N: **BO102-02-3084516**
 Rebuilt: (Y/N)
 As Is Price:
 Rebuilt Price:



DIMENSIONS/OTHER

Overall Height:	84"	Bale Size:	30 x 36
Overall Length:	240"	Bale Dogs: (Y/N)	No
Overall Width:	103"	Shear Bar: (Y/N)	No
Floor to Top of Chute:	84"	Machine Weight:	18,000
Chute: ID 28"x32" OD _____		Feed Opening:	28" x 32"

MOTOR SPECS

HP:	25	Amps:	60/30	Frame:	284TC
Volts:	230/460	RPM:	1770		

HYDRAULICS

Main Cylinder:	7"	Door Cylinder: (Y/N)	No
Rod Size:	5"	Tension Cylinder: (Y/N)	No
Cycle Time:		Tension Rod:	2"
ReGen:	Y	Oil Heater: (Y/N)	No
		Oil Cooler: (Y/N)	No

ELECTRONICS

PLC: (Y*/N)	Yes	*Specs:	MicroLogic
Model:	AB 1200		

ADDITIONAL FEATURES/NOTES

www.balerservicekc.com

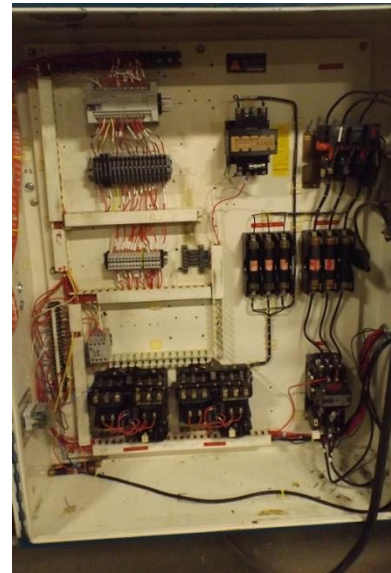
816.966.8916



BALER SERVICE COMPANY

INFORMATION WORKSHEET

PHOTOGRAPHS



www.balerservicekc.com

816.966.8916