



BALER SERVICE COMPANY

INFORMATION WORKSHEET

EQUIPMENT INFORMATION

Item ID: **19-5025**
 Type: **Baler**
 Make: **McDonald Auto Tie**
 Model: **AT330-F-2**
 S/N: **B10359**
 Rebuilt: (Y/N)
 As Is Price:
 Rebuilt Price:



DIMENSIONS/OTHER

Overall Height:	8' 8"	Bale Size:	30 3/4" x 40"
Overall Length:	19' 8"	Bale Dogs: (Y/N)	yes
Overall Width:	5' 7" w/o inserter	Shear Bar: (Y/N)	Yes
Floor to Top of Chute:	8' 8"	Machine Weight:	
Chute: ID _____ OD _____		Feed Opening:	30" x 28"

MOTOR SPECS

HP:	2 at 20 HP	Amps:	54/27	Frame:	215YZ
Volts:	230/460	RPM:	1725	Heat Exchanger:	

HYDRAULICS

Main Cylinder:	8"	Door Cylinder: (Y/N)	No
Rod Size:	5"	Tension Cylinder: (Y/N)	Yes
Cycle Time:		Tension Rod:	6" 3" rod
ReGen:		Oil Heater: (Y/N)	
		Oil Cooler: (Y/N)	Yes

ELECTRONICS

PLC: (Y*/N) **Yes - SLC500** *Specs:
 Model:

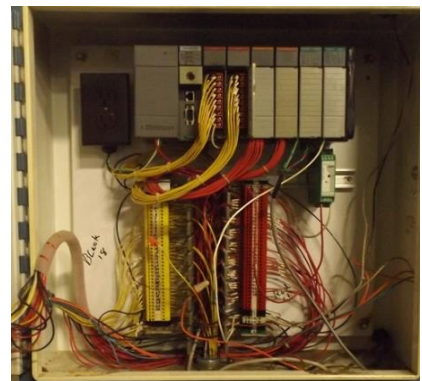
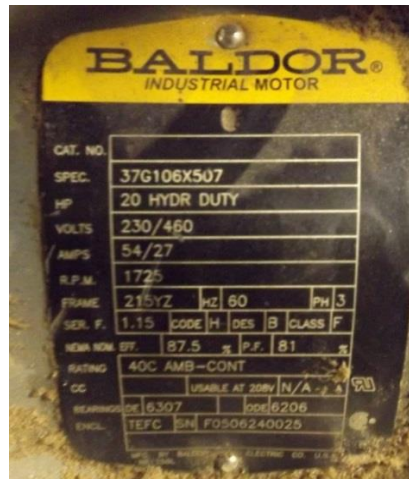
ADDITIONAL FEATURES/NOTES



BALER SERVICE COMPANY

INFORMATION WORKSHEET

PHOTOGRAPHS



www.balerservicekc.com

816.966.8916