



BALER SERVICE COMPANY

INFORMATION WORKSHEET

EQUIPMENT INFORMATION

Item ID: **19-5158**
 Type: **2 Ram Non-Ferrous**
 Make: **Marathon Nexgen**
 Model: **2R-190N-70**
 S/N: **165257**
 Rebuilt: (Y/N)
 As Is Price:
 Rebuilt Price:



DIMENSIONS/OTHER

Overall Height:	106.5"	Chute:	ID 40 3/4"x70" OD 47 3/16" x 76 1/2"
Overall Length:	326 5/8" (394" w/ladder)	Bale Size:	30" x 45" x 64"
Overall Width:	285 1/2" w/bale table	Bale Dogs: (Y/N)	No
		Shear Bar: (Y/N)	Yes
Floor to Top of Chute:	92 3/4"	Machine Weight:	31000 lbs
		Feed Opening:	40 3/4" x 70"

MOTOR SPECS

HP:	50	Amps:	120/60	Frame:	326TC
Volts:	230/460	RPM:	1760		

HYDRAULICS

Main Cylinder:	9"	Door Cylinder: (Y/N)	4 1/2" rod
Rod Size:	6"	Side Eject Cylinder: (Y/N)	7"
Cycle Time:	16 Per Sec.- 3.7 Per Min.	Tension Rod:	5"
ReGen:		Oil Heater: (Y/N)	Yes
		Oil Cooler: (Y/N)	Yes

ELECTRONICS

PLC: (Y*/N)	Yes	*Specs:	
Model:	Allen Bradley MicroLogix 1000	SN:	1L32BWA1AE-104105483

ADDITIONAL FEATURES/NOTES

Bale Separation/ Baler Release Combo door



BALER SERVICE COMPANY

INFORMATION WORKSHEET

PHOTOGRAPHS

Item ID: 19-5158



www.balerservicekc.com

816.966.8916

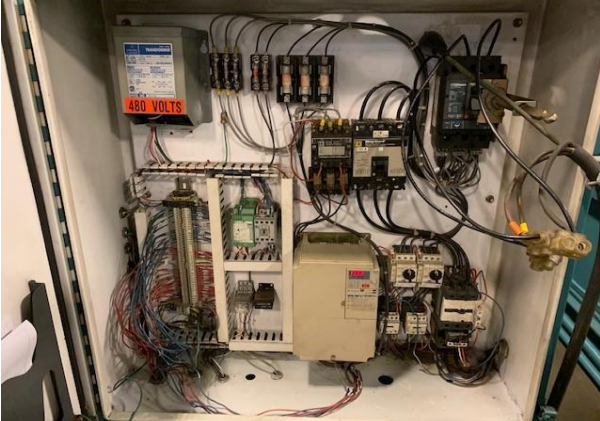


BALER SERVICE COMPANY

INFORMATION WORKSHEET

PHOTOGRAPHS

Item ID: 19-8158



www.balerservicekc.com

816.966.8916