



BALER SERVICE COMPANY

INFORMATION WORKSHEET

EQUIPMENT INFORMATION

Item ID: **16-5137**
Type: **Baler**
Make: **C&M Auto Tie**
Model: **3430+AT6-6**
S/N: **5348**
Rebuilt: (Y/N) **Yes**
As Is Price:
Rebuilt Price:



DIMENSIONS/OTHER

| | | | |
|-----------------|-----------------------|------------------|-------------------------|
| Overall Height: | 92" | Bale Size: | 30 x 39 1/2 |
| Overall Length: | 20' | Bale Dogs: (Y/N) | Yes |
| Overall Width: | 61" | Breaker Bar: | Yes |
| Chute Opening: | 34" x 30" I.D. | Insertor | 52" x 104" x 29" |
| Chute Height: | 32.5" | Chute flange: | 2" |

MOTOR SPECS

| | | | |
|--------|------------|-------|----------------|
| HP: | 30 | Amps: | 71/35.5 |
| Volts: | 460 | RPM: | 1460 |

HYDRAULICS

| | | | |
|-----------------|-------------------|-------------------------|------------|
| Main Cylinder: | 7" | Door Cylinder: (Y/N) | No |
| Main Bore Size: | 5" | Tension Cylinder: (Y/N) | Yes |
| Cycle Time: | 30 seconds | Tension Bore: | 3" |
| ReGen: | Yes | Oil Heater: (Y/N) | No |
| | | Oil Cooler: (Y/N) | No |

ELECTRONICS

| | | | |
|-------------|-------------------------------|---------|---|
| PLC: (Y*/N) | Yes | *Specs: | 110 vac in / 110 vac out |
| Model: | Allen Bradley 1768-PA3 | | w/10" touch screen and remote router |

ADDITIONAL FEATURES/NOTES

5 wire auto tie unit

www.balerservicekc.com

816.966.8916



BALER SERVICE COMPANY

INFORMATION WORKSHEET

PHOTOGRAPHS



www.balerservicekc.com

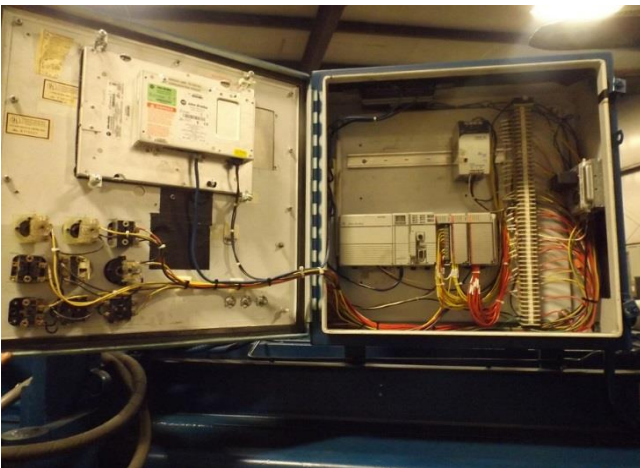
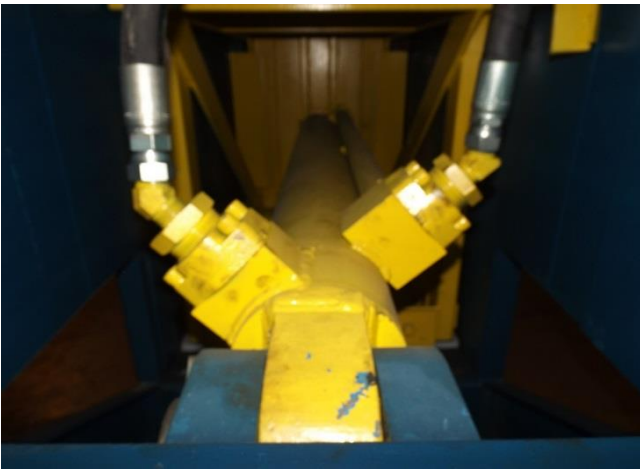
816.966.8916



BALER SERVICE COMPANY

PHOTOGRAPHS

INFORMATION WORKSHEET



www.balerservicekc.com

816.966.8916

Revised 2/2/2018